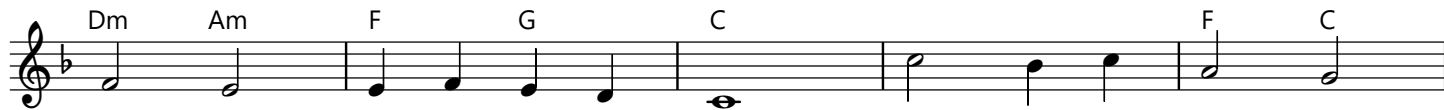


Draw Near and Take the Body of the Lord

Neale / ANIMA CHRISTI



1. Draw near and take the bod - y of the Lord, and drink his
2. Our true Re - deem - er, Christ the on - ly Son, by cross and
3. The vic - tims of - fered by the law of old, as signs from
4. Let us ap - proach with lov - ing hearts sin - cere, and take the
5. With bread of life he makes the hun - gry whole, gives liv - ing



1. ho - ly blood for you out - poured; saved by his bod - y
2. blood a might - y vic - t'ry won, off - 'ring him - self for
3. God, e - ter - nal mys - t'ries told, now Christ our light, the
4. pledge of our sal - va - tion here; Christ, who his faith - ful
5. wa - ters to each thirst - y soul. Christ Je - sus, first and



1. and his pre - cious blood, our souls re - freshed, we of - fer thanks to God.
2. great - est and for least, him - self the vic - tim and him - self the priest.
3. ran - som of our race, gives to his own this end - less source of grace.
4. ser - vants rules and shields, to all be - liev - ers life e - ter - nal yields.
5. last, is with us now, to him at end of time we all shall bow.

Inspiration: "Sancte venite, Corpus Christi sumite" from the "Antiphony of Bennchar", 7th cent.
Lyrics: 10.10.10.10; John M. Neale, 1818-1866, in his "Medieval Hymns and Sequences", 1851.
Music: ANIMA CHRISTI; William J. Maher, SJ, 1823-1877, in "Mission Hymns", 1864.